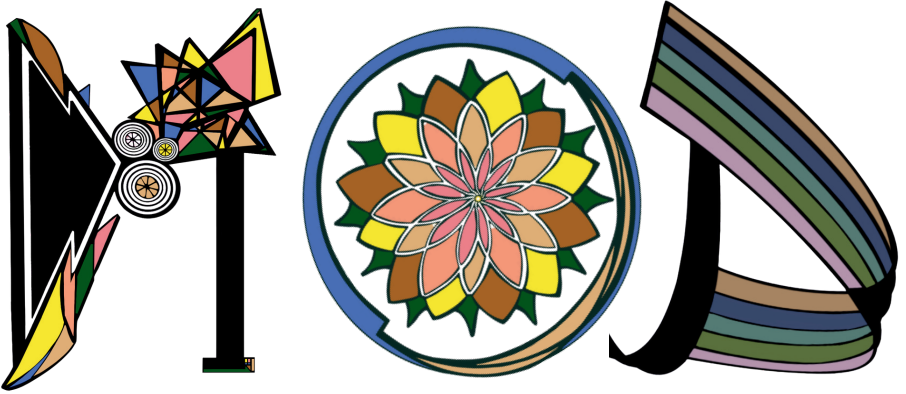


(MOD)ern MUSINGS

a GCA Flower Show
Presented by
Magnolia Garden
Club

March 31
–
April 1, 2026





MODERNISM:

A style or movement in the arts that aims to break with classical and traditional forms.

Musings:

A period or reflection or thought.

Magnolia Garden Club

Member of The Garden Club of America

Presents

(MOD)ern MUSINGS

A GCA Flower Show

March 30- April 1, 2026

Art Museum of Southeast Texas

500 Main Street

Beaumont, Texas

Open to the public

Tuesday, March 31, 2026 1:00pm- 4:00pm

Wednesday, April 1, 2026 9:00am-3:00pm

FREE OF CHARGE

STATEMENTS OF PURPOSE

THE GARDEN CLUB OF AMERICA

The purpose of The Garden Club of America is to stimulate the knowledge and love of gardening; to share the advantage of association by means of educational meetings, conferences, correspondence and publications; and to restore, improve and protect the quality of the environment through educational programs and action in the fields of conservation and civic improvement.

The purpose of a flower show is threefold: 1) to set standards of artistic and horticultural excellence; 2) to broaden knowledge of horticulture, floral design, conservation, photography and other related areas; and 3) to share the beauty of a show with fellow club members and with the public.

ART MUSEUM OF SOUTHEAST TEXAS

Through unique collections, exhibitions, public programs and outreach in the visual arts, the mission of the Art Museum of Southeast Texas is to provide education, inspiration and creative vision throughout Southeast Texas. Incorporated in 1950 as the Beaumont Art Museum, the museum reopened in 1987 at its present location as the Art Museum of Southeast Texas. The museum actively collects with an emphasis on fine and folk arts of the nineteenth through twenty-first centuries, focusing on regional art and folk art from Mexico. The museum's collections are enhanced by ambitious contemporary art and survey exhibitions, as well as numerous educational programs that emphasize the museum's mission and lend critical and historical context to the permanent collection.

The schedule for MOD(ern) MUSINGS is available on the following websites:
gcamerica.org and magnoliagardenclub.com

TABLE OF CONTENTS

FLOWER SHOW EVENTS.....	6
EDUCATION INFORMATION.....	7
DIVISION I	
FLORAL DESIGN	
Floral Design Classes.....	8
DIVISION II	
HORTICULTURE	
Horticulture Classes.....	12
DIVISION III	
PHOTOGRAPHY	
Photography Classes.....	15
DIVISION IV	
BOTANICAL ARTS	
Botanical Arts Classes.....	17
DIVISION V	
EDUCATION	
Education Exhibit.....	35
GCA FLOWER SHOW AWARDS.....	19
SPONSORING CLUB AWARDS.....	22

FLOWER SHOW EVENTS

Tuesday, March 31, 2026

1:00 p.m. – 4:00 p.m. Flower Show opens to the public

Wednesday, April 1, 2026

8:00 a.m. – 9:00 a.m. Refreshing and maintenance of exhibits

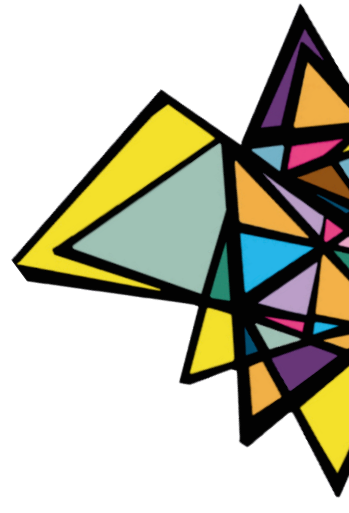
9:00 a.m. Flower Show opens to the public

11:00 a.m. – 12:00 p.m. Mid (MOD)ern Beaumont
Presented by local architect, Rob Clark

3:00 p.m. Show closes

3:15 p.m. Entry Removal to begin

4:00 p.m. All entries must be removed





EDUCATION INFORMATION

The educational focus of (MOD)ern MUSINGS is demonstrated in the Division V Exhibit, “Becoming MODern: Residential Architecture and Landscaping design in Beaumont, Texas from 1900 to the present.”

DIVISION I

Floral Design Classes

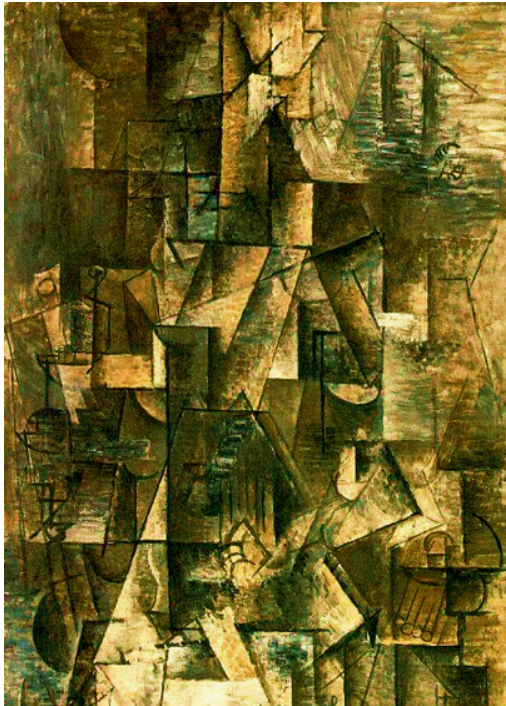
Class 1

GEOMETRIC ABSTRACTIONS

4 Entries

The Cubism movement, pioneered by artists like Pablo Picasso, revolutionized art in the early 20th century by deconstructing objects into geometric forms and multiple perspectives, challenging traditional representation and paving the way for modern abstract art.

Create a contemporary design inspired by Pablo Picasso's **Ma Jolie**. Staged on a 40" tall beige pedestal with a 14" square top. Design not to exceed 14" from the center of the pedestal in width or depth. No height restrictions. Viewed and judged from all sides. Statement of intent required.



Contemporary Design: floral design not following traditional styles, using imagination and creativity to devise new approaches to the selection and organization of plant material and other components according to the principles and elements of design.

Class 2

PURITY IN FORM

4 Entries

Frank Lloyd Wright's modern approach to architectural design emphasized harmony between human habitation and nature by seamlessly integrating structures with their environment and expressing organic unity.

Create "foam free" design inspired by the architectural style of Frank Lloyd Wright. Staged on a 40" tall beige pedestal with a 16" square top. Design not to exceed 16" from the center of the pedestal in width or depth. No height restrictions. Viewed and judged from three sides. Statement of intent required. The use of floral foam is not permitted.

Sustainable floristry practices are essential for reducing environmental impact, preserving biodiversity, and promoting healthier ecosystems. Avoiding traditional floral foam, which is non-biodegradable and sheds microplastics, helps protect soil and water quality while encouraging the use of eco-friendly alternatives like reusable mechanics and natural materials.

Class 3

MODERN ILLUSIONS

4 Entries

Salvador Dalí's work was characterized by his use of dreamlike, surreal imagery, meticulous detail, and a fascination with the subconscious, combining bizarre and fantastical elements with precise realism to challenge the boundaries of reality and perception.

Create a reality bending design interpreting Salvador Dalí's ***Swans Reflecting Elephants***. Staged on a 40" tall beige pedestal with a 16" square top. Design not to exceed 16" from the center in width or depth. No height restrictions. Viewed and judged from all sides. Statement of intent required.



Class 4

(MOD)ern SILHOUETTES

4 Entries

Modernist fashion designers used avant-garde silhouettes, geometric forms, and unconventional color palettes to push creative boundaries and redefine beauty through a contemporary lens.

Select one of the designers below and create a dress or gown inspired by the designer's body of work during the early to mid-20th Century Modernism Movement (1900-1950). Design may include fresh and/or dried plant materials. Staged on a mannequin*. Design not to exceed 3' from the center in any direction. No height restrictions. Viewed and judged from all sides. Statement of intent required.

*A mannequin will be provided upon registration. This class is limited to entrants within a 90 mile radius of Beaumont, Texas unless willing to pick up. Mannequins may not be mailed.

A. **Coco Chanel**

B. **Charles Wilson Brega James**

C. **Pierre Balmain**

D. **Christian Dior**

Class 5

FLOW AND FORM

4-6 Entries

Henri Matisse, a preeminent artist of the Modernism movement, revolutionized painting with his bold use of color, expressive forms, and dynamic compositions, emphasizing emotional impact over realism and creating a distinctive style that redefined artistic expression and paved the way for abstraction in modern art.

Create a bold and expressive design interpreting Henri Matisse's ***La Danse***. Staged on a 40" tall beige pedestal with a 14" square top. Design not to exceed 14" from the center in width or depth. No height restrictions. Viewed and judged from three sides. Statement of intent required. ***This class is only open to Novice* floral designers.***



*Novice: An exhibitor who has never won first place or GCA Special Award in the Floral Design Division at a GCA, GCA Major Flower Show, sanctioned non-GCA, or sanctioned non-GCA Major Flower Show.

Ikebana, with its emphasis on simplicity, balance, and the beauty of negative space, aligns with the modernism movement by embracing minimalist aesthetics and the exploration of form and structure in floral design.

Create an Ikebana inspired floral design using the provided container, mechanics, and plant materials. **This class is only open to members of the Magnolia Garden Club Junior Gardeners.**

Ikebana: *Ike* means “life,” while *bana* means “flowers.” Ikebana may be literally translated as “living flowers.” Ikebana may mean “to bring life to the flowers” as when an arrangement is made. The three main lines are heaven, man, and earth (*Shin, Soe, Tai/Hikae*).



DIVISION II

Horticulture Classes

CLASSES 1-42/ CUT SPECIMENS

Classes 1 – 3 Annuals *An annual is a plant that completes its life cycle in one growing season.*

Grown for flowers/any foliage must be attached to stem.

1. Single stem
2. Three stems of same species or cultivar

Grown for foliage

3. Single Stem

Classes 4-13 Perennials and Biennials

Grown for flowers/any foliage must be attached to stem.

4. Single stem
5. Three stems of same species or cultivar

Grown for foliage

6. Single stem/variegated
7. Single stem/non-variegated
8. Three stems of same variegated species or cultivar
9. Three stems of same non-variegated species
10. Other

Grown for foliage-single stem

11. Ferns
12. *Farfugium*
13. Other

Classes 14-20 Bulbs, Corms, Rhizomes and Tubers

Grown for flowers/foliage permitted if attached to single stem

14. *Amaryllis* – one to four flowers
15. *Amaryllis* – five or more flowers
16. Iris
17. Grown for foliage - single stem
18. *Alocasia*
19. *Colcasia*
20. Other

Classes 21-24 Roses

One stem or spray with at least one leaf containing five leaflets

21. Hybrid tea
22. Old Garden/Roses in existence before 1867
23. Climber
24. Other

Classes 25-27 Trees – single branch

- 25. Flowering
- 26. Foliage
- 27. With Fruits, Berries or Nuts

Classes 28-31 Shrubs – single branch

- 28. Flowering
- 29. Foliage/variegated
- 30. Foliage/non-variegated
- 31. Foliage with Fruits, Berries or Nuts

Classes 32 – 34 Climbers and Vines

- 32. Flowering
- 33. Foliage
- 34. With Fruits, Berries or Nuts

Classes 35-39 Edibles

- 35. Fruit/attached to stem/six-month ownership required
- 36. Vegetable/grown from seed by exhibitor
- 37. Herb/one to three stems of the same species
- 38. Herb/three to five stems, multiple specimens of different species or cultivars. Key card required.
- 39. Spices (ex: cardamon, ginger, turmeric)

Classes 40-42 Cut Collection

Cut material from the exhibitor's garden arranged in a clear container provided by the exhibitor. The arrangement must have a minimum of three species and may not exceed 26" in any direction including container. Key card required.

- 40. Flowering
- 41. Foliage
- 42. Combination of Flowering and Foliage

CLASSES 43-68 CONTAINER GROWN PLANTS

NO HANGING BASKETS

Classes 43-45 Plants grown primarily for foliage

- 43. One specimen per container
- 44. More than one plant of the same species or cultivar per container.
- 45. More than one plant of a different species or cultivar in a single container. Key card required.

Classes 46-48 Plants grown primarily for flowers/one specimen per container

- 46. Begonias
- 47. Orchids/six month ownership required
- 48. Other

Classes 49-55 Cacti and Succulents

One year ownership required

49. One cactus per container
50. More than one cacti per container of different species. Key card required.
51. Collection of four different cacti in separate containers. Key card required.
52. One succulent per container
53. More than one succulent of the same species per container. Key card required for identifying different varieties.
54. Collection of four different succulents in separate containers. Key card required.
55. Collection of a maximum of four different succulents in one container. Key card required.

Classes 56-59 Propagation

A plant propagated by the exhibitor with a 4"x6" color photo of the parent plant. Propagation information required on a separate 4"x6" unlined white card.

56. A plant from a cutting
57. A plant from a seed
58. A plant from division
59. Other

Class 60 Vegetables

60. Vegetables

Class 61-63 Herbs

61. One plant per container
62. More than one plant of the same species or cultivar per container.
63. More than one plant of different species or cultivar in a single container. Key card required.

64. Miniatures – a mature example of a plant which is naturally diminutive.

65. Grasses

- A) Variegated
- B) Non-Variegated

Class 66 PAR

An exhibit of exceptional horticultural merit, which does not qualify for entry elsewhere in the Horticulture Division. Entries in the Par class must have been owned and grown by the exhibitor for a minimum of one year. Cut specimens and hanging baskets are not permitted.

Class 67

JUNIOR GARDENERS: *Euphorbia* cuttings. To be distributed in the fall. This class is only open to all Magnolia Garden Club Junior Gardeners.

DIVISION III

Photography Classes

Class 1 MOD Model B&W 4 Entries

A Still Life Study of a single fruit or vegetable that celebrates shape, texture and light in the modernistic style of Edward Weston. Plant material is required.

Class 2 MOD Spaces Color 4 Entries

A Kodachrome exploration of a grand landscape. Plant material is required.

Class 3 MOD Angles B&W 4 Entries

A photograph of an architectural element of a building shot from an unusual angle, that focuses on light, geometric line, and tonal range. Plant material not required.

Class 4 MODelight Color 4 Entries

A creatively edited close-up image of a flower/flower part that creates a pleasing design not instantly recognized as a flower/flower part. Plant material is required.

Class 5 MOD Silhouettes B&W 4 Entries

An abstract modernist study in line and form capturing the shadows of the geometric shapes of a structure. Can include the structure. Plant material is not required.

Class 6 MOD Protege Color

A Still life featuring fruits and/or vegetables arranged to convey a visual story. *This class is only open to Magnolia Garden Club Junior Gardeners.*

Definitions from *FS & JG Book 5: Glossary of Terms*

Abstract: a photo that focuses on shape, form, color, pattern, and texture. It seeks to show the subjects essence, not the reality.

Black and white: an image executed in black and white.

Close-up: a photo taken close to the subject to permit a detailed view of the object.

Creative Techniques: used to achieve a visual effect that significantly departs from a purely representational depiction of the subject matter. The visual effect may be achieved via in-camera techniques or editing. Creative techniques may include representational, abstract imagery, or both. All representative images in a photograph using creative techniques must be the work of the photographer. No third-party, stock, or AI-generated images or elements are allowed. Nonrepresentational enhancements, such as purchased textures, are allowed. Creative techniques photographs may be entered in any class unless it is excluded in the class description.

Landscape: a view of scenery of any kind from wilderness vistas to urban cityscapes, land, or sea. The primary subject is the scenery, and it must dominate although the image may contain secondary elements such as people, animals, or objects.

Still Life: an arrangement of natural or man-made objects, or a combination of both, to convey a visual story or allegory or to explore broader compositional concepts such as color, form, light or shadow.

Still Life Study: a single object or a small group of similar objects intentionally arranged to convey a visual story or allegory or to explore broader compositional concepts such as color, form, light or shadow.

DIVISION IV

Botanical Arts Classes

SECTION A. BOTANICAL JEWELRY

Botanical Jewelry: a design created entirely from dried plant material and made to resemble wearable jewelry in both size and function. Plant material may be treated. Mechanics or structural base material may not be visible. *Special Note: Jewelry pieces should NOT be exact copies of existing fine or costume jewels.*

Class 1

MOD Dane

4 Entries

Create your version of a mid-century pin in the style of Danish designer, Georg Jensen. Displayed on a 5" round black velvet pad. Entry may not exceed the size of the mount. Viewed and judged from three sides and above. Staging details will be sent upon entry. Statement of intent is optional.

Class 2

MOD Design

4 Entries

A Challenge Class. Create an Art Deco pendant from components provided by the Flower Show Committee upon registration. The base is supplied and must be used, but may be altered. A black silk cord will be supplied and must be used. No other dried plant components may be used other than those supplied by the committee, and all supplied plant components are not required to be used. All finishes including paints, glues and mechanics are the choice of the exhibitor. Displayed on a 12.5 inch black velvet easel. Viewed and judged from three sides. Staging details will be sent upon entry. Statement of intent is optional.

SECTION B. BOTANICAL COUTURE

Botanical Couture: a design emulating an item of clothing and/or other fashion accessory created from all dried plant material or couture form that is entirely embellished with dried plant material. Plant material may be treated. Mechanics or structural base material may not be visible.

Class 3

MOD Drama

4 Entries

Create a dress inspired by Balenciaga designs of the 1940s. Crafted on an 8-inch black display mannequin provided by the committee upon registration. Displayed on a 7-inch black velvet pad. Not to exceed the display pad. Viewed and judged from four sides and above. Staging details will be sent upon entry. Statement of intent is optional.

DIVISION V

Education Exhibit

Becoming (MOD)ern:

Residential Architecture and Landscape design in
Beaumont, Texas from 1900 to the present.

STATEMENT OF INTENT:

Residential landscapes in Beaumont, Texas have changed dramatically since 1900. After WWII, construction innovations, cultural and societal influences, along with climate variability have affected trends in landscape design.

This exhibit will explore the evolution of these trends and how they impact residential landscapes today.

GCA FLOWER SHOW AWARDS

The GCA Flower Show Awards described below are approved and will be presented if merited.

Division I, Floral Design

Best in Show Floral Design is selected from first-place winners in the division.

The **Dorothy Viotor Munger Award** may be awarded to members of GCA clubs in competitive Floral Design classes at a GCA Flower Show. It is offered in recognition of creative work of outstanding beauty using predominantly fresh plant material. The design must have placed first, second, or third. Challenge class entries are not eligible. The award is not a substitute for Best in Show and will be given at the discretion of the judges.

The **Harriet DeWaele Puckett Creativity Award** may be awarded to members of GCA clubs or non-members in recognition of a uniquely skillful and creative response to an imaginative schedule in Floral Design. It will be given for an innovative and interpretive entry, which, although it abides by the principles of good design, goes beyond traditional period arrangement to whatever art form the exhibitor(s) chooses. The design must have placed first, second, or third. An entry in any challenge class is not eligible to receive this award. The award is not a substitute for Best in Show and will be given at the discretion of the judges.

The **Sandra Baylor Novice Floral Design Award** may be given at a GCA Flower Show to an exhibitor who is a member of a GCA club and who has never won first place or GCA Special Award in the Floral Design Division of a GCA, GCA Major, sanctioned non-GCA, or sanctioned non-GCA Major Flower Show. It shall be awarded to an individual novice exhibitor for a unique and skillful response to the schedule. The entry must have placed first, second, or third. An entry in a challenge class is not eligible for this award.

Division II, Horticulture

Best in Show Horticulture is selected from first-place winners in the division.

The **Catherine Beattie Medal** may be awarded for a horticulture entry distinguished by its vibrancy, prime condition, and perfection of grooming. The exhibitor must have owned and grown the exhibit for at least six months. The medal may be awarded for a single plant, collection of plants, container garden, or cut specimen, but only if there is an exhibit worthy of the honor. It may be awarded to members of GCA clubs only; individual, joint, and club entries are eligible. The entry must have placed first, second, or third. The award should not be considered as a substitute for Best in Show. The medal may not be awarded to the same exhibit more than once; however, the offspring of a Beattie winner are eligible to receive the award.

The **Clarissa Willemsen Horticulture Propagation Award** may be awarded for a horticulture entry distinguished by its prime condition, flawless grooming and difficulty of propagation. The entry must have been propagated and grown by the exhibitor for at least six months. This award may be given for a single rooted plant or a collection of rooted plants. Cut specimens are not eligible. The dates and method of propagation must be recorded on an accompanying propagation card. It may be awarded to GCA club members, GCA clubs, non-members, or other organizations. The entry must have placed first, second, or third. The award may not be given to the same exhibit more than once.

The **Rosie Jones Horticulture Award** may be presented to a horticulture entry of exceptional visual appeal that reflects the spirit of growing with joy and enthusiasm and inspires others to propagate, grow, show and share horticulture. An exhibit that has been propagated by the exhibitor will be given special consideration but propagation is not a requirement. Perfection, while always desirable, is not a primary criterion. This award celebrates the ineffable joy inherent in the beauty and pursuit of horticulture. It may be awarded to GCA club members, GCA clubs, non-members, or other organizations. The entry must have placed first, second, or third.

The **GCA Novice Award in Horticulture** may be awarded for an outstanding exhibit to a member of a GCA club who has never won first place or GCA Special Award in the Horticulture Division in a GCA, GCA Major, sanctioned non-GCA, or sanctioned non-GCA Major Flower Show. The entry must have placed first, second, or third.

Division III, Photography

Best in Show Photography is selected from first place winners in the division.

The **Photography Creativity Award** may be awarded at a GCA Flower Show to a member of a GCA club in recognition of creative and technical excellence in response to the theme of the schedule. The entry must have placed first, second, or third.

The **GCA Novice Award in Photography** may be awarded for an outstanding exhibit to a member of a GCA club who has never won first place or GCA Special Award in the Photography Division in a GCA, GCA Major, sanctioned non-GCA Flower Show, or sanctioned non-GCA Major Flower Show. The entry must have placed first, second, or third.

Division IV, Botanical Arts

Best in Show Botanical Arts is selected from first place winners in the division. An entry in a challenge class is not eligible for this award.

The **Botanical Arts Creativity Award** may be awarded at a GCA Flower Show to a member of a GCA club for excellent craftsmanship and creative response to the theme of the schedule. The entry must have placed first, second, or third. An entry in a challenge class is not eligible for this award.

The **GCA Novice Award in Botanical Arts** may be awarded for an outstanding exhibit to a member of a GCA club who has never won first place or GCA Special Award in the Botanical Arts Division in a GCA, GCA Major, sanctioned non-GCA, or sanctioned non-GCA Major Flower Show. The entry must have placed first, second, or third. An entry in a challenge class is not eligible for this award.

Division V, Education

The **Ann Lyon Crammond Award** may be presented at a GCA Flower Shows to an outstanding educational exhibit which best educates the public about gardens. Any educational exhibit which increases the appreciation of any aspect of plants, gardens, or landscape design may be considered for this award. It may be awarded to GCA club members, member clubs, non-members or other organizations.

The **Marion Thompson Fuller Brown Conservation Award** may be presented for an outstanding conservation exhibit at a GCA Flower Show. The award recognizes an exhibit of exceptional educational and visual merit, which increases knowledge and awareness of the environment. The exhibit should emphasize environmental concerns and may demonstrate conservation practices. Plant material may or may not be used and, when appropriate, must be clearly identified. Protected material may be included if such materials are identified as protected and not collected in the wild. It may be awarded to GCA clubs, club members, non-members or other organizations.

Overall (Divisions I - V)

Judges' Commendation(s) may be given to an entry, class, section, special exhibit or other aspect of the show that is of exceptional merit.

Award of Appreciation may be given to an exhibitor or group for participation and/or to recognize exhibits that do not qualify GCA special awards. The award may also be given to non-judged classes.

MAGNOLIA GARDEN CLUB AWARDS

Magnolia Garden Club Awards will be presented in the following categories, if merited, and only to MGC members.

DIVISION I: FLORAL DESIGN

Best Interpretation of Theme / Best Use of Color

DIVISION II: HORTICULTURE

Best Cut Specimen / Best Container Grown

DIVISION III: PHOTOGRAPHY

Excellence in Story Telling/ Best Interpretation of Theme / Best Use of Movement

DIVISION IV: BOTANICAL ARTS

Best Interpretation of Theme / Best Use of Color

Magnolia Garden Club Junior Gardeners Awards will be presented in the following categories to MGC Junior Gardeners + Gentlemen Junior Gardeners.

DIVISION I: FLORAL DESIGN/ JUNIOR GARDENERS

Best Use of Color/ Most Creative/ Best in Show

DIVISION II: HORTICULTURE/ JUNIOR GARDENERS

Best in Show

DIVISION III: PHOTOGRAPHY/ JUNIOR GARDENERS

Best Use of Color/ Most Creative/ Best in Show

Curators Awards will be presented, if merited, to any exhibit.

DIVISION I: FLORAL DESIGN

DIVISION II: HORTICULTURE

DIVISION III: PHOTOGRAPHY

DIVISION IV: BOTANICAL ARTS

